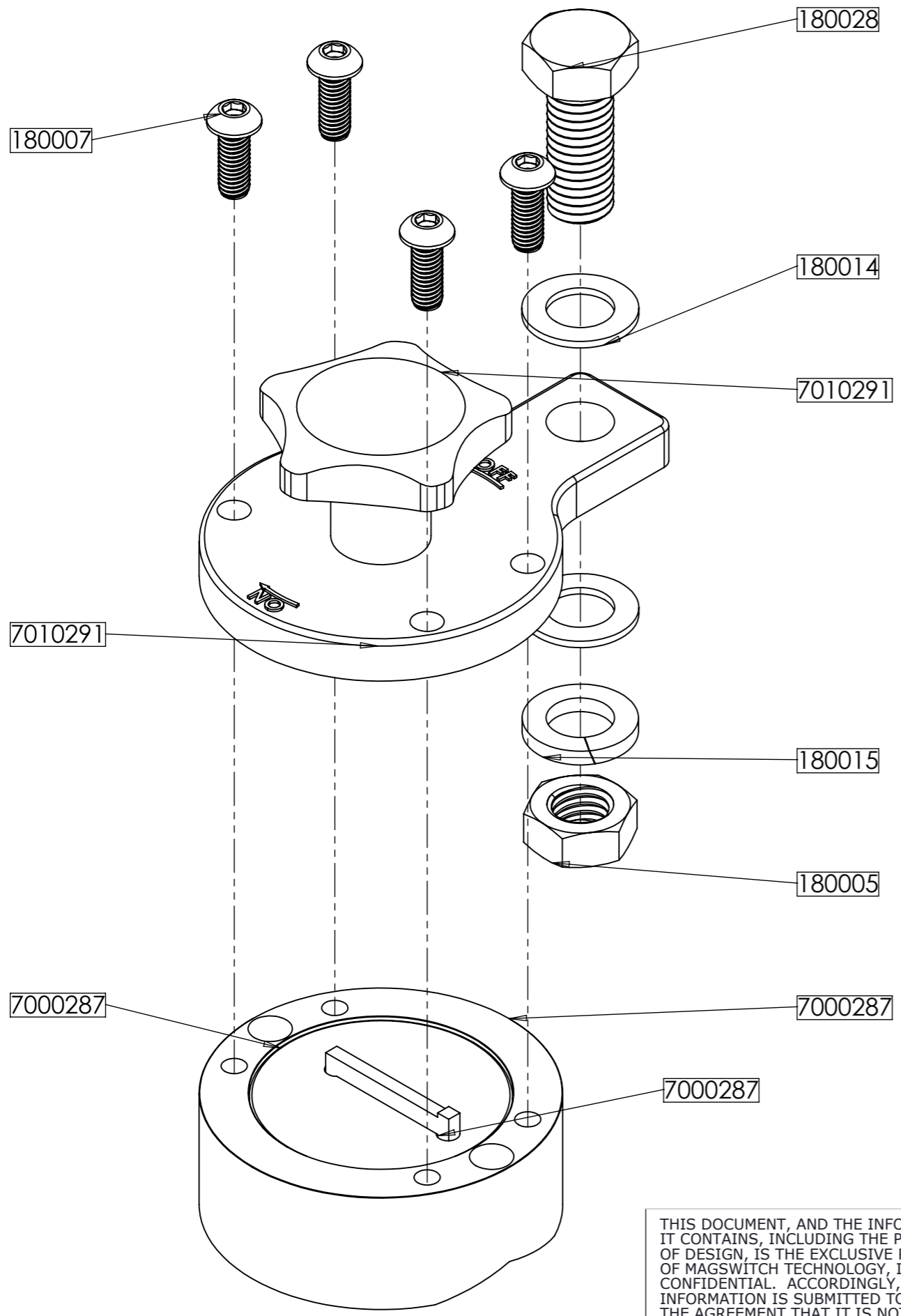


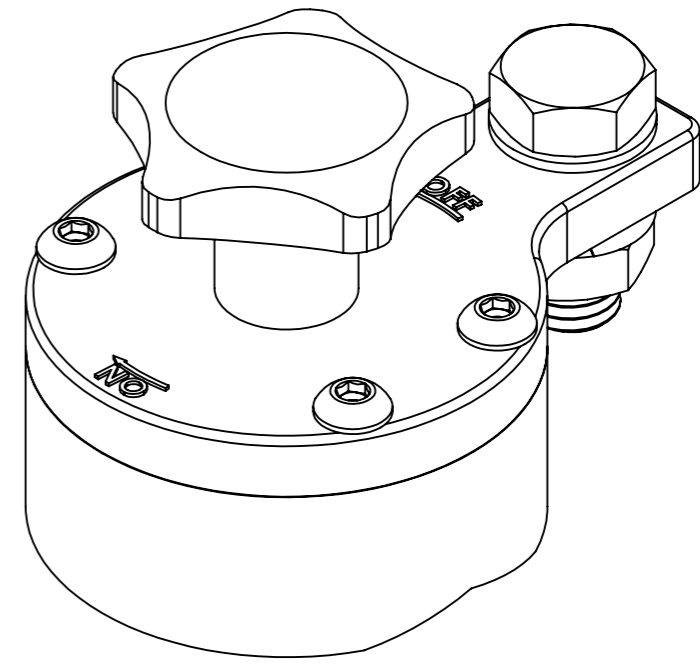
1 2 3 4 5 6

ITEM NO.	PART NUMBER	DESCRIPTION	QTY.
1	7000287	50mm U housing assy	1
2	7010291	50mm WGC Lid Assy 012C	1
3	180007	M6-16 BUTTONHEAD SCS	4
4	180014	1/2" flat washer	2
5	180028	1/2-13 X 1.25 HCS	1
6	180015	1/2" split lock washer	1
7	180005	1/2-13 HJN	1

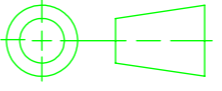



NOTES:

- TORQUE SCREWS (180007) TO 36inlbs ± 2inlb
- APPLY LOCTITE BEFORE ASSEMBLY OR USE PREAPPLIED SCREWS
- ZINC PLATING (7000287) IS PER QQ-Z-325. PLATING IS TO PASS SALT SPRAY ASTM B117
- MAGNETS ARE NDFEB COMPOSITION PER MMPA STANDARD NO. 0100-00
- SOLID PTFE AND PETROLIUM GREASE MAY CONTAIN PTFE PARTICLES (7000287)
- COMPONENTS MAY MEET OTHER STANDARDS PROVIDED THAT PERFORMANCE IS EQUAL
- VERIFY ACTUATION MATCHES ARROWS



THIS DOCUMENT, AND THE INFORMATION IT CONTAINS, INCLUDING THE PRINCIPLES OF DESIGN, IS THE EXCLUSIVE PROPERTY OF MAGSWITCH TECHNOLOGY, INC. AND IS CONFIDENTIAL. ACCORDINGLY, THIS INFORMATION IS SUBMITTED TO YOU WITH THE AGREEMENT THAT IT IS NOT TO BE REPRODUCED, COPIED, OR LOANED IN PART OR IN WHOLE, NOR IS THE INFORMATION TO BE RELAYED TO ANY OTHER INDIVIDUAL OR COMPANY EXCEPT AS MTI FIRST AUTHORIZES IN WRITING. ACCEPTANCE OF THIS DOCUMENT CONSTITUTES AGREEMENT TO THESE RESTRICTIONS.

INTERPRET DRAWING PER: ANSI Y14.5M-1994	DRAWN John Fisher	DATE 9/2/09
DIMENSIONS ARE IN MILLIMETERS	DESIGN	DATE
 THIRD ANGLE PROJECTION DO NOT SCALE	STD. CHECK	DATE
	F/F CHECK	DATE
	APPROVED	DATE


 621 SOUTHPARK DRIVE, UNIT 1900
 LITTLETON, COLORADO 80120
 303-468-0662 / FAX 303-690-8144

TITLE:
50mm WGC 012C/Black

SIZE A3	CAGE CODE	DWG. NO. 8000316	REV 2
SCALE 1:1		WEIGHT: 696.19 g	SHEET 1 OF 1

1 2 3 4 5 6