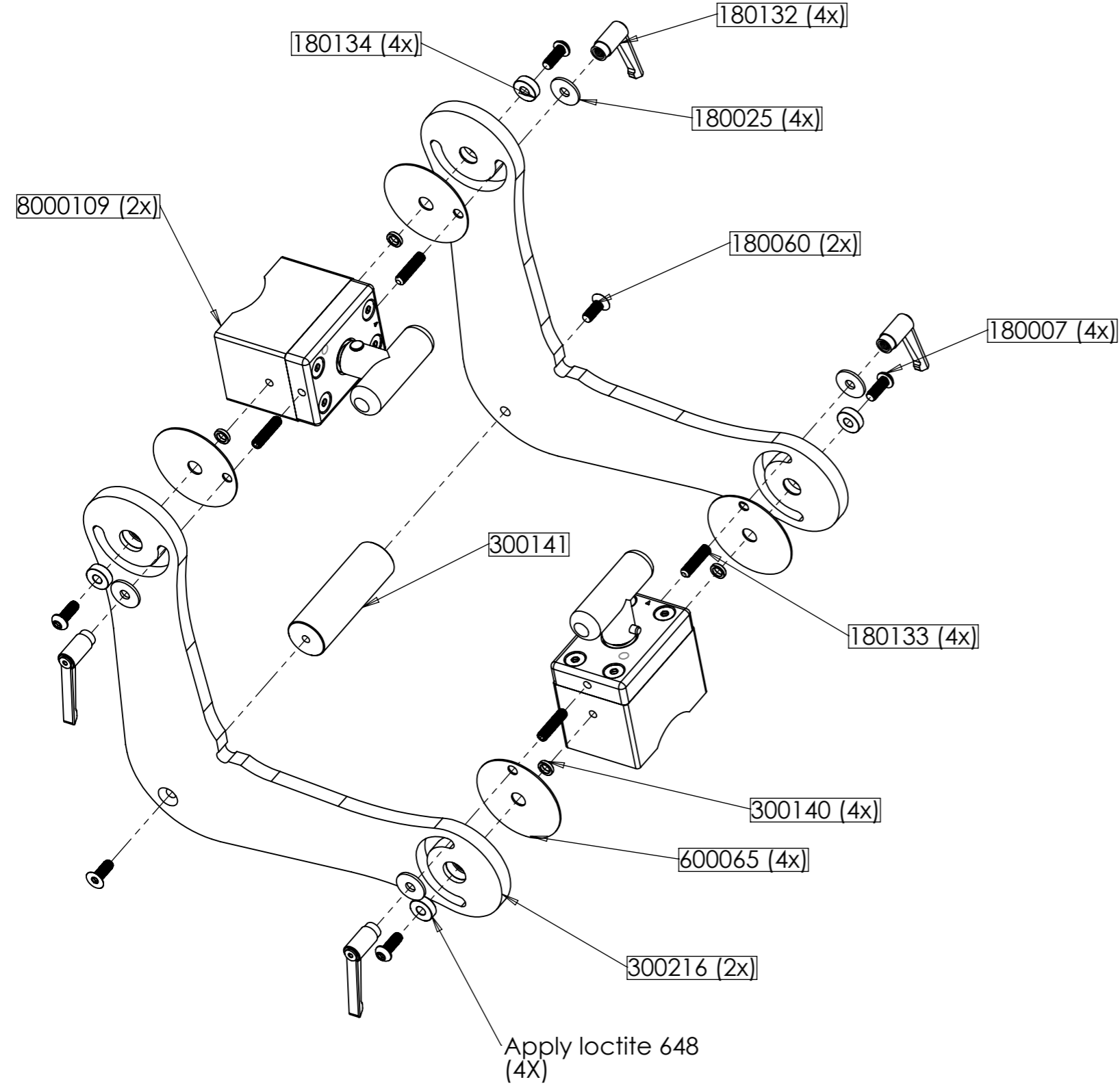
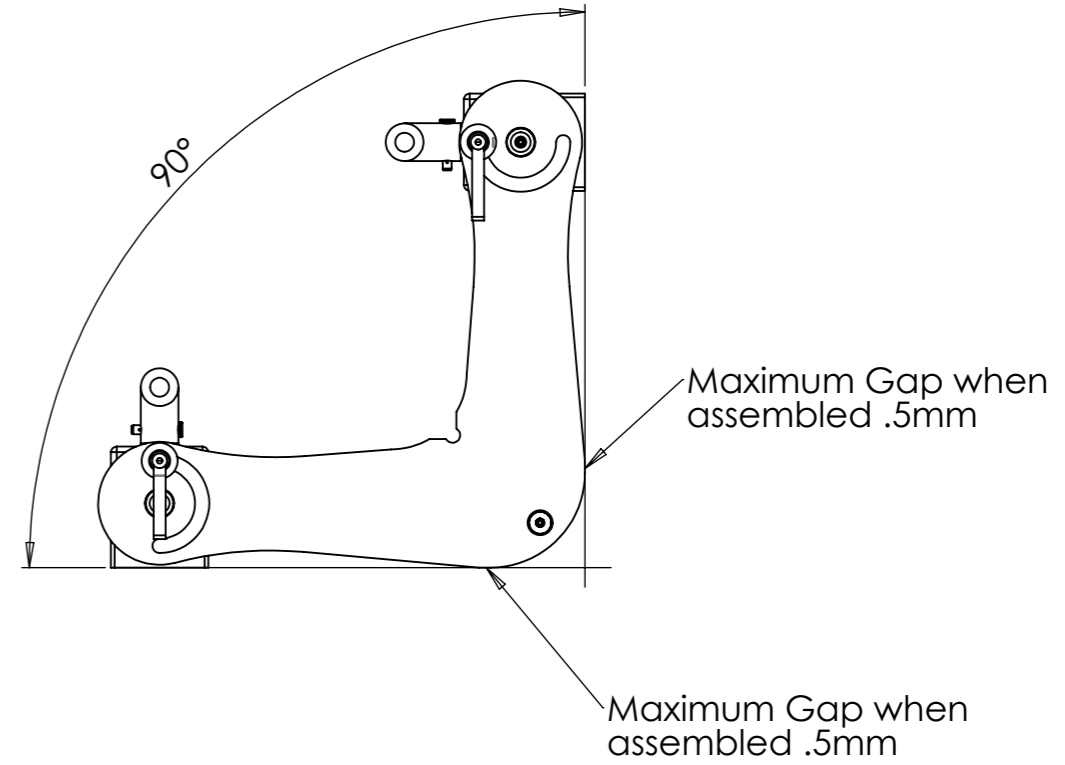


PART NUMBER	DESCRIPTION	QTY.
300216	50mm Boomer Angle Machined	2
8000109	50mm R 66mm T HANDLE, 2 HOLE	2
300141	50mm BOOMERANGLE SPACER	1
180060	M6-16 FLAT HEAD SCS	2
180007	M6-16 BUTTONHEAD SCS	4
180025	1/4in FLAT WASHER	4
180132	HANDLE WITH M6 THREAD	4
180133	M6 X 25 SET SCREW	4
300140	50mm BOOMERANGLE PIVOT/SPACER	4
600065	WASHER, 57mm OD, 9.5mm ID	4
180134	696-2RS BEARING, 6mm ID, 15mm OD	4

- NOTES:
- APPLY LOCTITE 222 TO SCREWS(180007 & 180060) BEFORE ASSEMBLY
 - TIGHTEN SCREWS(180007, 180060, & 180133) TO 30 inlbs ± 4 inlbs
 - SEE 8000090-AI FOR ASSEMBLY PROCEDURE



THIS DOCUMENT, AND THE INFORMATION IT CONTAINS, INCLUDING THE PRINCIPLES OF DESIGN, IS THE EXCLUSIVE PROPERTY OF MAGSWITCH TECHNOLOGY WORLDWIDE AND IS CONFIDENTIAL. ACCORDINGLY, THIS INFORMATION IS SUBMITTED TO YOU WITH THE AGREEMENT THAT IT IS NOT TO BE REPRODUCED, COPIED, OR LOANED IN PART OR IN WHOLE, NOR IS THE INFORMATION TO BE RELAYED TO ANY OTHER INDIVIDUAL OR COMPANY EXCEPT AS MTW FIRST AUTHORIZES IN WRITING. ACCEPTANCE OF THIS DOCUMENT CONSTITUTES AGREEMENT TO THESE RESTRICTIONS.

INTERPRET DRAWING PER: ANSI Y14.5M-1994	DRAWN AARON HALE	DATE 8/14/2008
DIMENSIONS ARE IN MILLIMETERS	DESIGN	DATE
THIRD ANGLE PROJECTION	STD. CHECK	DATE
	F/F CHECK	DATE
DO NOT SCALE	APPROVED JOHN FISHER	DATE 2/2/09

621 SOUTHPARK DRIVE, UNIT 1900
LITTLETON, COLORADO 80120
303-468-0662 / FAX 303-690-8144

TITLE:
50mm BOOMERANGLE

SIZE B	CAGE CODE	DWG. NO. 8000090	REV 5
SCALE 1:1		WEIGHT: g	SHEET 1 OF 1